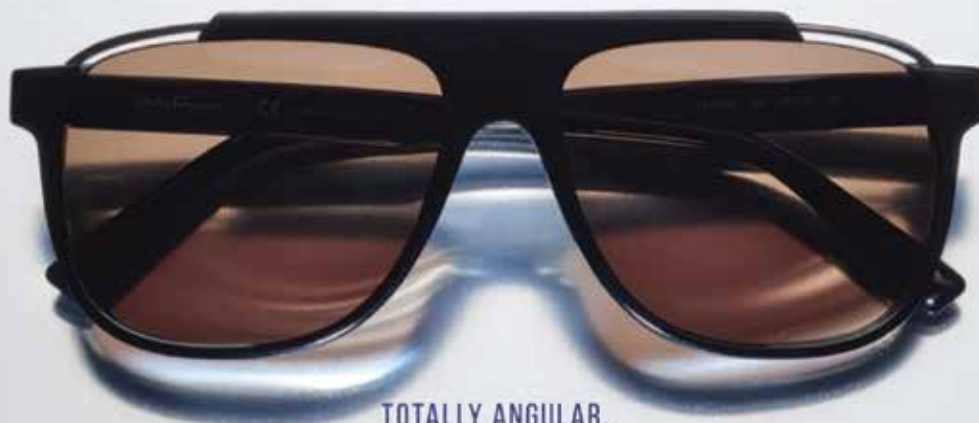


◆◆◆ Fashion Feature



TOTALLY ANGULAR.

From Top:

The **Öga Linjer 101530** from **Morel Eyewear** is a unique angular panto style featuring a textured gray frame front with blue pop color temples.

The **Evatik 9219** from **WestGroupe** features a thin acetate front with geometric inspirations highlighted with metal piping.

The **Salvatore Ferragamo SF1011S** from **Marchon Eyewear** is a standout sunwear style boasting a supremely modern effect with cutouts and lightly colored lenses inspired by retro design influences.